

# TIFFIN

2026

CLASS-B

# GH2



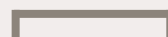
SEATS

2-4



SLEEPS

2



SIZE

22' 11"

# 22 BV

The Tiffin GH2 is designed to offer a blend of luxury, off-road capability, and compact livability. Its compact size and all-terrain capabilities allow you to explore off-the-beaten-path destinations without worrying about accessibility or maneuverability. Inside, it's equipped with high-quality amenities like a functional kitchen, comfortable sleeping area, and smart storage solutions, so you can enjoy the comforts of home wherever you go. It's the perfect travel companion for those who crave freedom, flexibility, and a touch of style on the road.

## FEATURES

- GVWR: 9050 lbs
- Hitch Rating: 5000 lbs
- 2500 Mercedes-Benz® Sprinter AWD
- 15,000 BTU Energy Efficient Variable Speed Gree A/C
- 3,000 Watt Inverter/Charger
- Diesel Hydronic Heating
- 540 Amp-Hour Lithium Batteries
- Girard Power Awnings w/ LED
- Diamondshield Black Front Hood Wrap
- Premium Hardwood Plywood w/ High-Pressure Laminate Lower Cabinets
- 24" x 36" Wet Bath with Toilet Platform
- Mounting Plates For Owl Rear Door Components Preinstalled
- Heated Leather Seats with Electronic Controls
- Pre-Wired For Always-On Wolfbox Rearview Camera
- Agile Offroad Fox Shocks
- Screw Retention Backer Added For Common Aftermarket Floor Mat Options
- 49" x 79" Power Lift Bed with Gear Garage Below
- Victron Touchscreen Control Panel
- Wire Prep for Starlink® Mini



Tiffin GH2 22 BV Floor Plan

USE THIS AREA TO ASSIST YOU DURING YOUR RV BUYING JOURNEY.

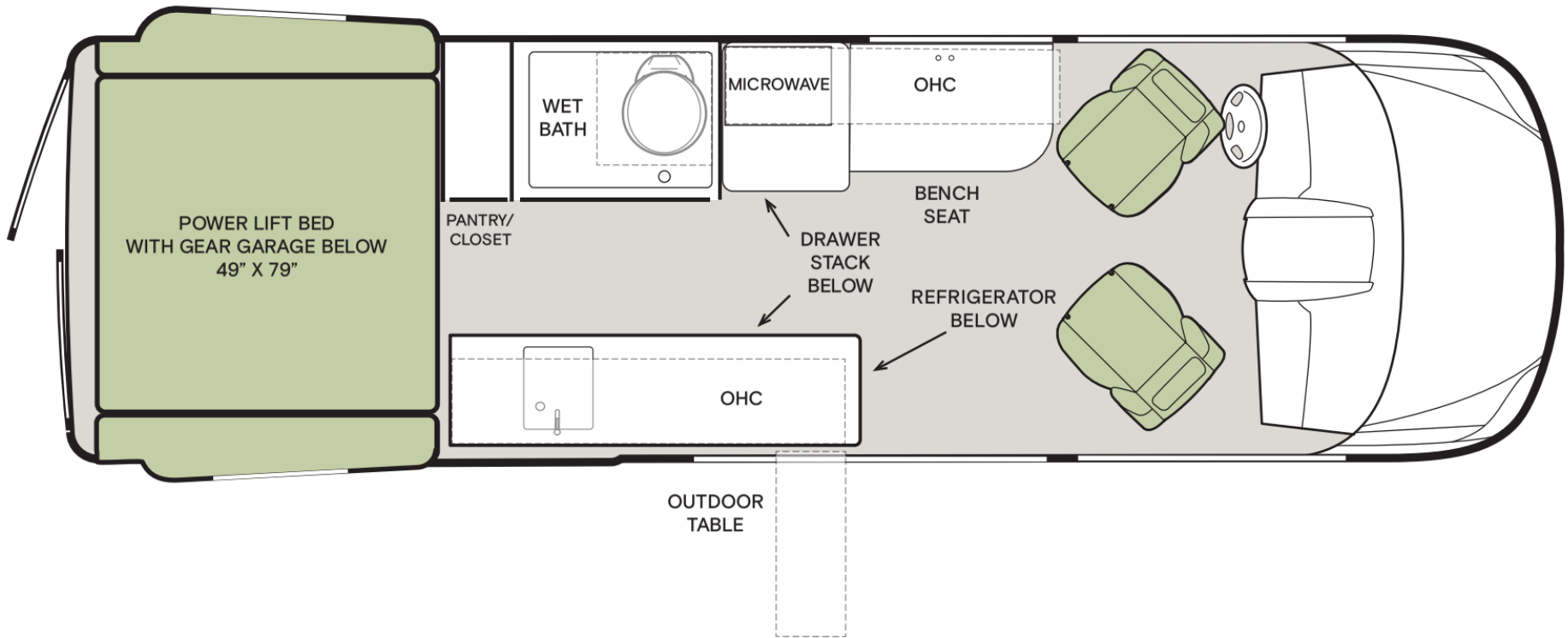
RATE YOUR WALK THROUGH  
RESPONSE FOR THIS FLOOR PLAN:

WOW FACTOR: 1 (NOT SO SPECIAL) - 5 (AWESOME)

1    2    3    4    5

NOTES: \_\_\_\_\_  
 \_\_\_\_\_  
 \_\_\_\_\_

\_\_\_\_\_  
 \_\_\_\_\_  
 \_\_\_\_\_  
 \_\_\_\_\_  
 \_\_\_\_\_



If optional furniture combinations are selected, window locations may vary from diagram shown.  
 All options may not be available in every model. Because of progressive improvements and specifications, standard and optional equipment are subject to change without notice or obligation.  
 For a complete and up-to-date list of available options and specifications, visit [tiffinmotorhomes.com](http://tiffinmotorhomes.com).

FOR INSIDE SALES CALL 256-356-8661 OR VISIT [TIFFINMOTORHOMES.COM](http://TIFFINMOTORHOMES.COM)

105 2ND ST NW RED BAY, AL 35582  



All trademarks and logos are owned or used under license by Tiffin Motor Homes, Inc. and include, but are not limited to: TIFFIN®, MANY ADVENTURES. ONE DREAM.™, ALLEGRO®, ALLEGRO BREEZE®, ALLEGRO RED®, PHAETON®, ALLEGRO BUS®, ZEPHYR®, WAYFARER®, ROUGHING IT SMOOTHLY®, OPEN ROAD®, POWERGLIDE®, CAHABA®, BYWAY™, and associated logos and emblems. Unauthorized use of any trademark of Tiffin Motor Homes, Inc. is strictly prohibited.

© Copyright 2025 Tiffin Motor Homes, Inc.

For all information concerning the limited warranty provided by Tiffin, please refer to the full written limited warranty set forth on the Tiffin website or held by our authorized dealerships. Please note, some interior furnishings not included. Revised: 9/13/24